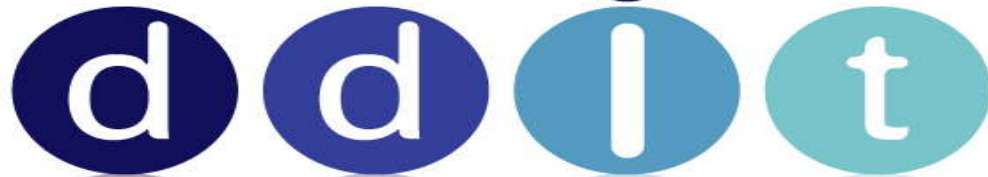


البعد المطور لتقنية المعلومات



DEVELOPED DIMENSION INFORMATION TECHNOLOGY

SEAPRO DIVING & HYDROGRAPHIC



Some of SEAPRO
Equipments
Ednibweuz

Equipments

Hydrographic Survey

υδρογραφική έρευνα

HYPACK MAX 6.2

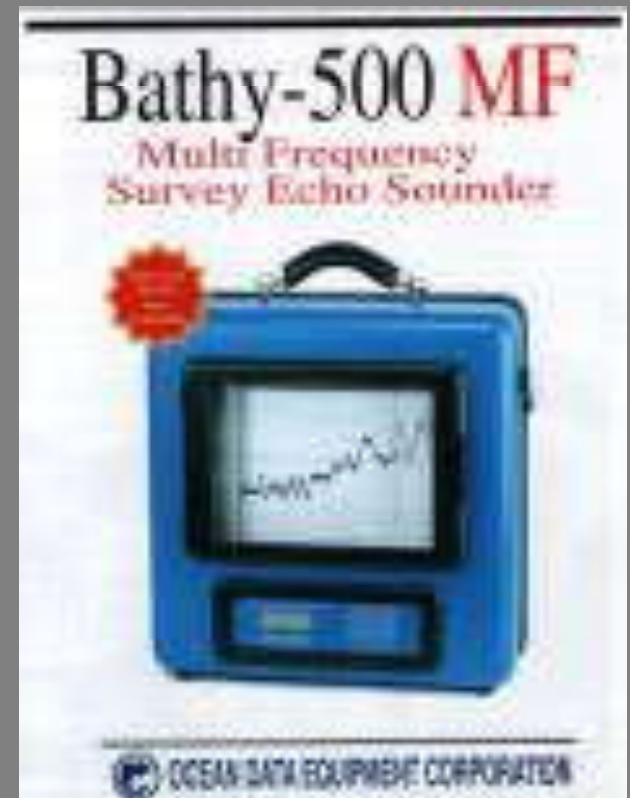
HYPACK, Inc. develops PC-based software for marine surveying, positioning and navigation.



Bathy 500 MF

Channel Dual-beam echo sounder for hydrographic survey operations.

Accuracy: ± 0.5 % at 200 kHz



Equipments

Hydrographic Survey

ηλεκτρονική συσκευή

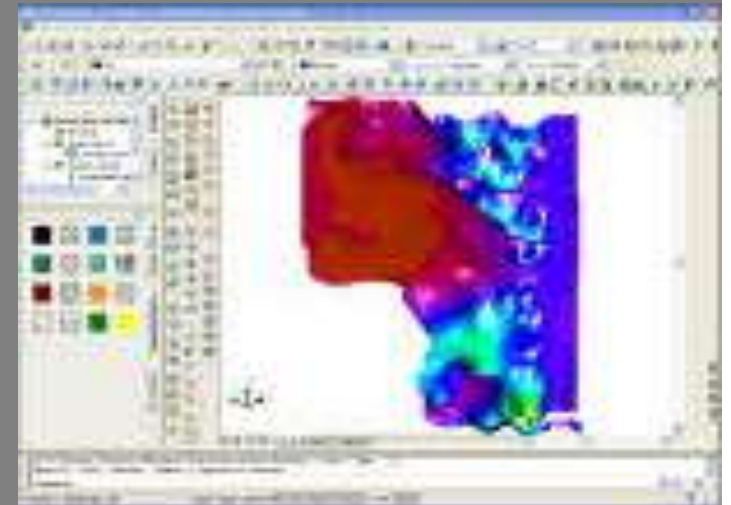
DGPS MAX csi wireless

(WAAS) enable which delivers sub-meter 95% horizontal accuracy to meet demanding positioning requirements and supports position update rates up to 5 Hz for high performance application



AutoCAD Map 2005

For drawing the Bathymetric, Contour sheets also for producing a 3d view and Cross section view for all surveyed line through out the digital data exported from Hypack Max software.



Equipments

Hydrographic Survey

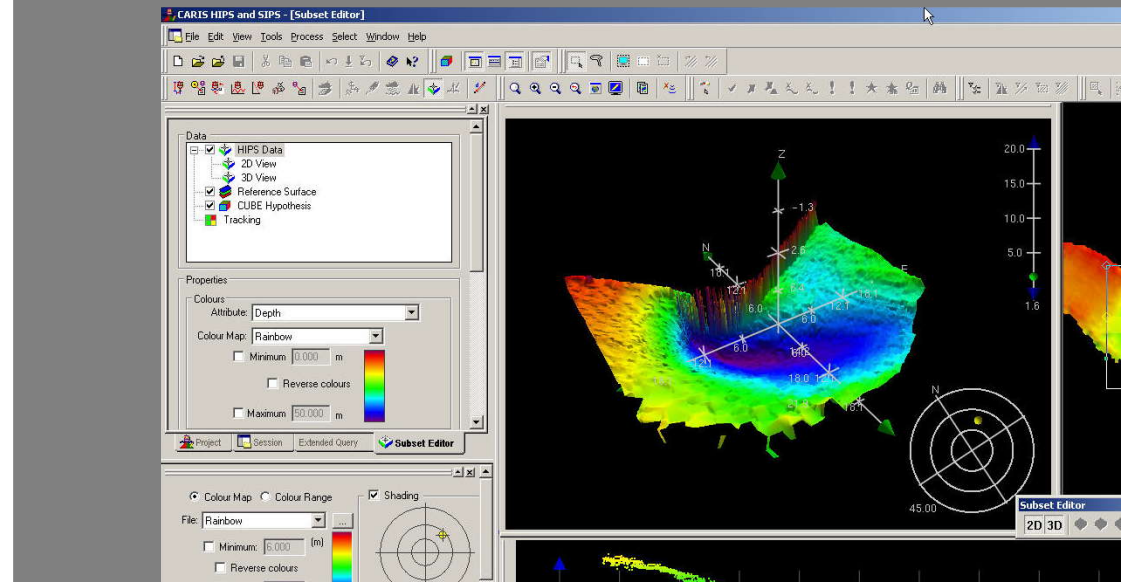
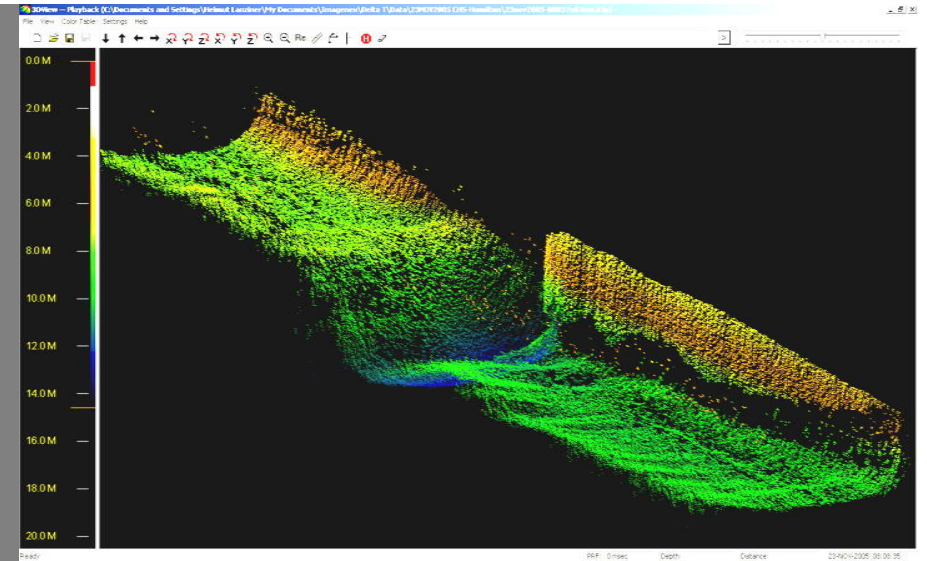
Imagenex Technology Corp

Full data profile display

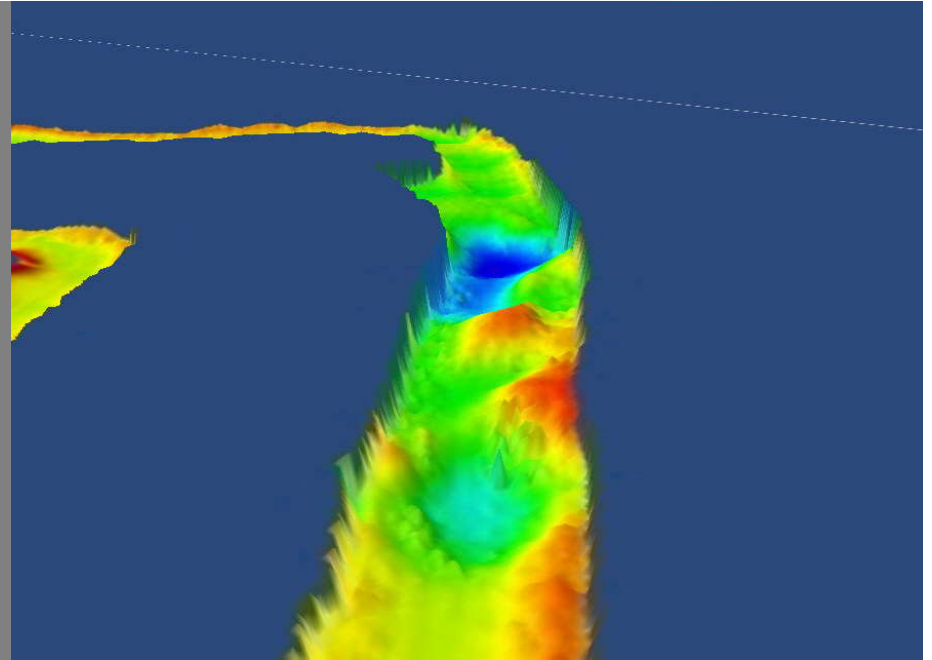
Mapping - Bathymetry - Survey

Profile View - 2D view and 3D view

Delta T Multi Beam Profiling Sonar



Equipments Hydrographic Survey



Delta T Multi Beam Profiling Sonar

The Imagenex Model Delta T is a multiple receiver sonar system designed to provide video-like Imaging with all the advantages of underwater sonar. Innovative digital signal processing is used To optimize data usage from all channels to achieve the best possible resolution at every point in The field of view. Recent advances in computing power have made it possible to transfer and Process this data at resolutions equal to computer monitor resolution, and with image frame rates Of better than 20 frames per second! The Model Delta T system has been designed from the ground up with the most advanced, high Accuracy, low power electronic components available to provide breakthroughs in system power Consumption, package size, and price. This advanced electronics package has built inflexibility And programmability to accommodate a wide range of transducer arrays. Thus, the Model 837 is The first in a family of new technology products which will have imaging and profiling capabilities To suit your underwater application.

Equipments Hydrographic Survey

ηλεκτρονική υπηρεσία

Equipment

Side Scan Sonar.

Tritech DSF-1000



Features:

- Simultaneous 4 channels side scan display
- NMEA 0183 navigation input
- Image correction
- Mosaic generation (optional)
- Target, capture, zoom, view, measure, store, and compare
- Selectable color palettes
- 25 to 1000 meter range
- Graphic printer drivers

Applications:

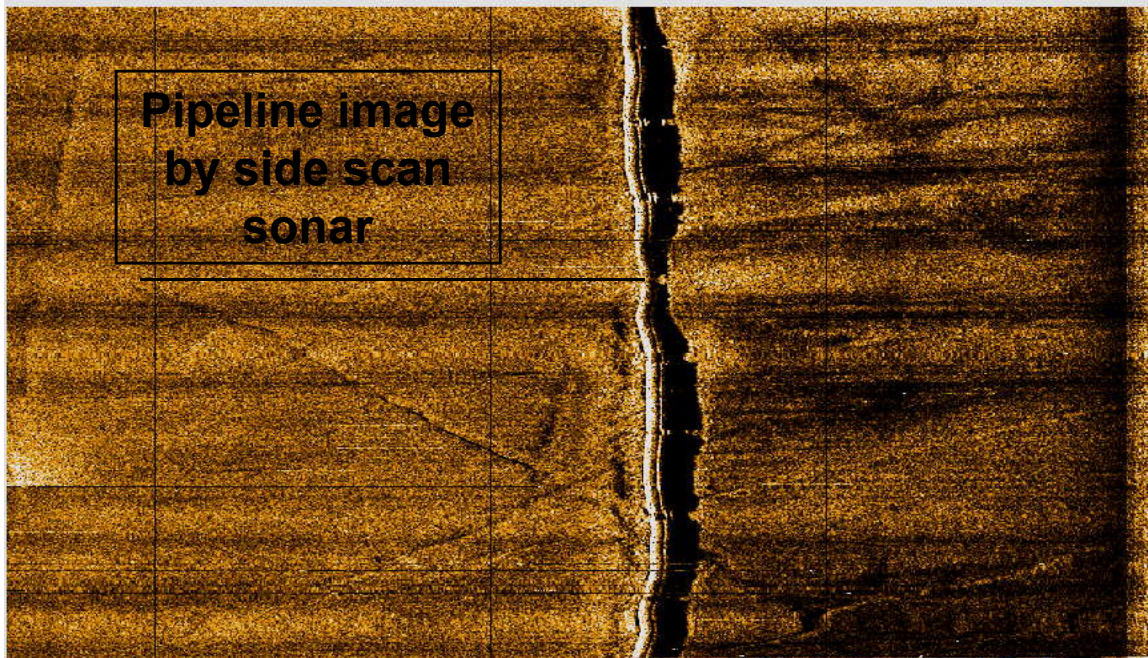
- Hydrographic surveys
- Channel conditioning and clearance surveys
- Geological surveys
- Cable and pipeline surveys
- Search and recovery
- Site selection surveys, pre/post dredging surveys
- Location of potential seafloor hazards
- Mine countermeasures

Equipments

Hydrographic Survey

ηλεκτρονική ζηλευ

Side scan survey is carried out to detect exposed area of pipeline to plan the ROV survey after



Latitude:	31:25.0068 N	Fish Heading:	6.7 deg	Pressure:	40.2 psia	TowFish Altitude (meters)	11
Longitude:	032:44.7915 E	Pitch:	-1.8 deg	Errors:	No Errors		
Course:	0.0 deg	Roll:	5.0 deg				



Seavey Falcon



Equipments

Hydrographic Survey

ηλεκτρονική σταθμολογία

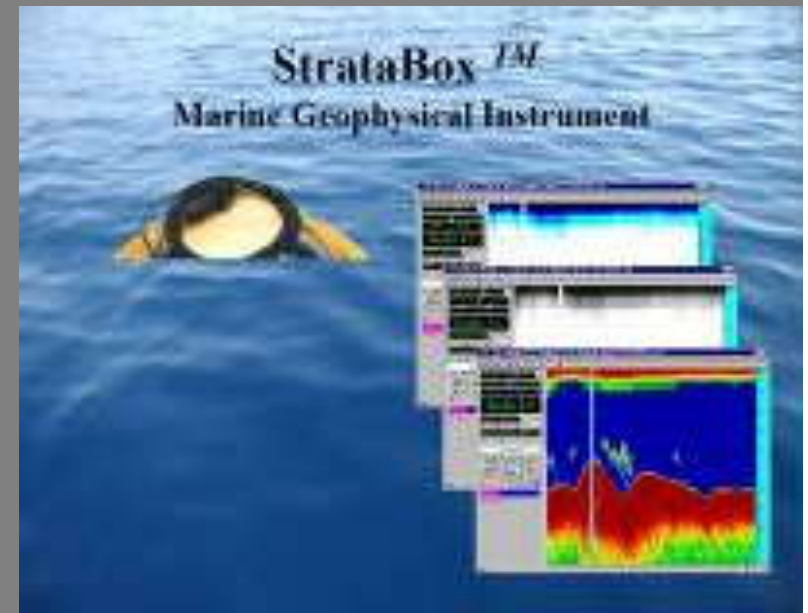
Total station MATO(Sokkia Version)

For coast lining, land survey, and surf zoon area leveling



StarataBox TM

It is a portable high-resolution marine sediment imaging instrument capable of delivering 6cm of marine sediment strata resolution with bottom penetration of up to 40 m. it is designed exclusively for inshore and coastal geophysical marine survey up to 150 m of water depth.



Equipments

Hydrographic Survey

ηλεκτρονική σπινθήρα



In cooperation with ROV Service Italy

Observation & Inspection class ROVs

- Maximum working depth 1000 meters
- Length 1030 mm
- Height 590 mm
- width 700 mm
- weight 150 Kg
- Pay load 32 Kg

Seaeye Falcon Features:

- 300 meter depth rating, 16 kilo payload .
- Max 450 meter umbilical (1100 meters Fiber Optic)
- Magnetically coupled brushless DC thrusters
- 4 Vectored and 1 vertical thruster
- 50 kgf thrust with 1:1 power to weight ratio
- Distributed intelligence control system
- High resolution color camera on 180° Tilt Platform
- Auto heading, depth, compass and rate gyro
- Portable surface control system with video overlay
- Low drag umbilical
- Single phase A/C power input - auto selecting universal 100-270 VAC at 2.8 kW



Equipments - DGPS RTK PRO MARK – 3

Hydrographic Survey

ηλεκτρονική

Valport Digital Tide Gauge



Navigat X MK-1 Gyro Compass:

Standard features

- Control and display unit in front cover with 4-digit heading display and 6 operating keys
 - Easy to install and easy to service
 - High-speed follow-up system 100° / sec.
 - Rate of turn output
 - Automatic static north speed error connection
- Highly accurate digital heading data transmission by shaft encoder



Equipments

Diving

DIVER

Diver
Magnetometer



**Detects buried
ship wreck ,
mines steel
material under
water diver
operated**



Metal Detectors

