

## MBX Seal PC

### Remote video processor unit



#### Features

- Rugged sealed access design
- Shockproof 30GB hard disk
- GPRS/GSM module and integrated antenna
- Two composite video inputs
- Integrated GPS module
- 1Gbit Ethernet
- USB 2.0 & WLAN
- Protected to IP66 for dust and water
- Internal USB bay for software protection devices

The MBX Seal PC is a powerful and compact processor unit ideally suited to remote video surveillance applications in harsh outdoor environments.

Special weather-sealed ports provide connection for two video cameras to support simultaneous full speed capture of composite PAL or NTSC channels making the MBX Seal PC ideal for ANPR and video surveillance applications. Images are processed at source and data can be transmitted back to a server using the unit's WLAN or GPRS connectivity.

The MBX Seal PC is a Windows XP based platform and features our high performance MAT 1111 single board computer. It provides rich functionality to support a varied range of applications and is housed in a rugged sealed access unit that meets both EMC and environmental requirements including Standard IP66 for dust and water ingress.

The cover allows access to the SIM card, hard disk, memory module, CMOS battery and the USB bay for software protection devices.

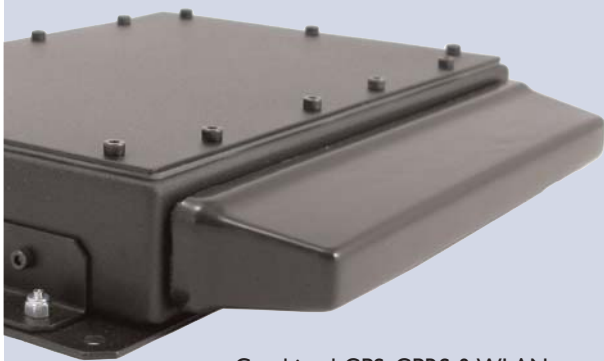
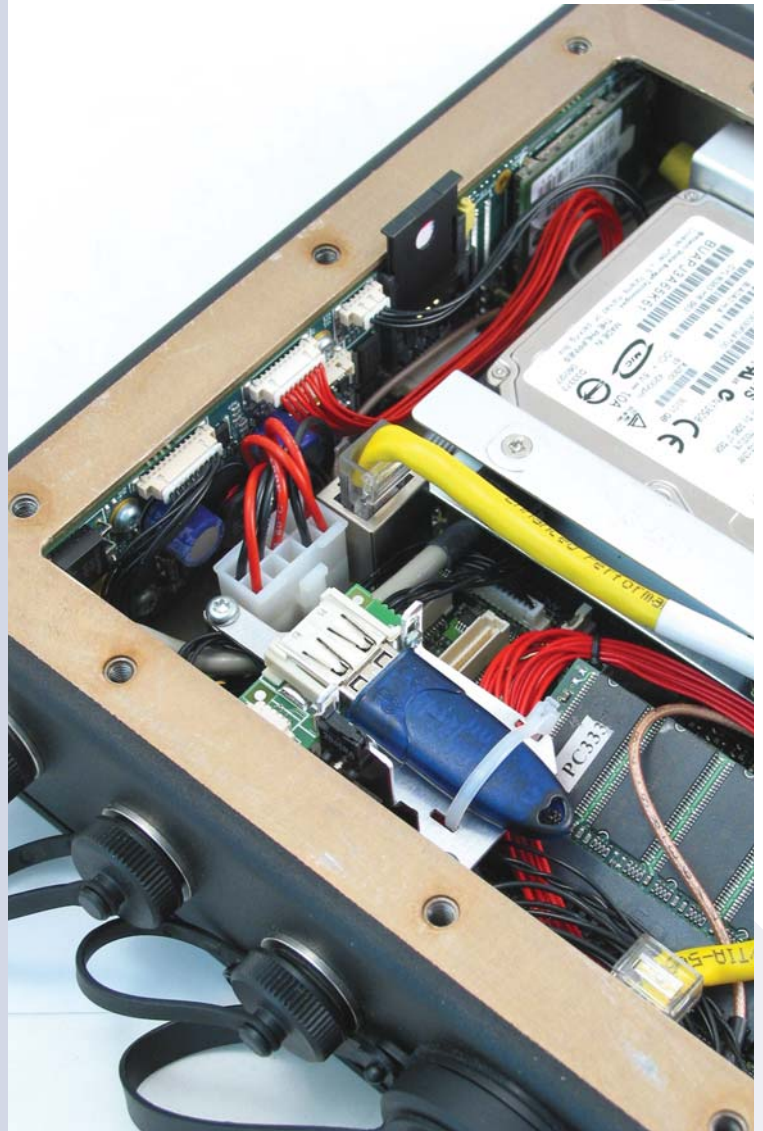
For security sensitive applications there is a built-in tamper switch that, when enabled, detects when the unit is opened, even when the power is switched off. The system can then be disabled, rendering it inoperative. The integrated 30GB hard drive withstands both shock and vibration, and can operate in an extended temperature range of -30°C to +55°C. The unit's minimum start up temperature is -20°C.

The MBX Seal PC provides sealed connection for a 12V power supply, a GPRS/GSM modem and integrated antenna, GPS module and WLAN connectivity. There is additional sealed connection 1Gbit Ethernet and USB.

# MBX Seal PC

## Technical Specification

Operating System	Windows® XP
Processor(s)	Intel® Centrino-compatible Pentium® M 1.4GHz (10W)
Chipset	Intel 855GME
Bus speed	400MHz FSB
Memory/RAM	1GB in one 64-bit SDRAM DDR
Hard drive	30GB vibration tolerant hard drive
BIOS	Phoenix/Award®
Video output	Composite video with sealed coaxial connector
Ethernet	Intel® 10/100/1Gbit with sealed RJ45connector
Video input(s)	Two sealed composite video inputs
Frame grabber	Philips 7130
USB	USB Type A with sealed connector
GPRS	Internal module with GPRS/GSM antenna
GPS	Internal 20 channel GPS receiver
Software protection	USB bay
CMOS Battery	3.6V
Thermometer	Measures processor temperature
Software watchdog	Programmable via BIOS call
Voltage watchdog	Monitors 1.25, 2.5, 3.3, 5 & CPU core voltages
Unit dimensions	325 x 255 x 56mm
Environment	-30 to +55°C operating (-20°C start up) -40 to +85°C storage RH 0 to 95% non condensing
Power	12V DC, sealed connector
IP Rating	IP66
CE Mark	Designed to EN55022/EN55024 Class B



Combined GPS, GPRS & WLAN antenna



Microbus Ltd

Tel: +44 (0) 1628 537333

Email: [sales@microbus.com](mailto:sales@microbus.com)

Fax: +44 (0) 1628 537334

[www.mobile-data.com](http://www.mobile-data.com)



Microbus